

## Caravan Angel CTI Battery Replacement

This document provides general information only and may be subject to change at any time without notice.



***SAFETY FIRST! Must read.***

### **Precautions:**

1. Use eye protection, gloves, and a face shield;
2. Do not apply strong pressure to the batteries nor handle them roughly;
3. Keep batteries away from direct sunlight, high temperature and humidity;
4. Do not disassemble, nor dispose of in fire;
5. Do not discharge by force;
6. Other general precautions for batteries:
  - a. Do not drop;
  - b. Do not crush and disassemble;
  - c. Do not short circuit;
  - d. Do not recharge;
  - e. Do not incinerate;
  - f. Do not expose to water.

**We cannot accept any responsibility for any injury or defect in the batteries if the above warnings are not followed.**

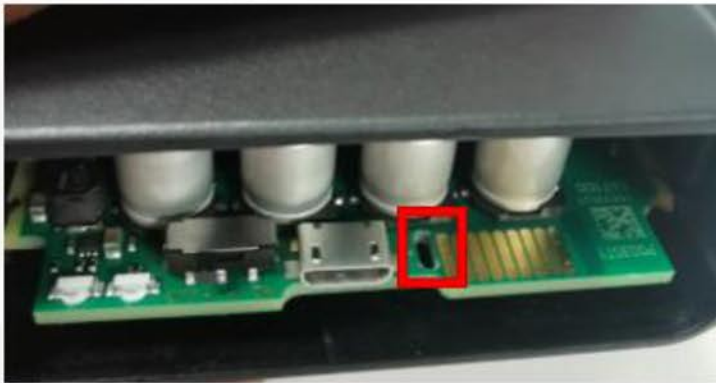
**IMPORTANT: It is advised to use plastic tools in order to avoid damaging the contacts. If you only have metal ones make sure to avoid touching any contacts with it.**



1. Remove the cap (Make sure not to use sharp objects to avoid damage to the device)



2. Pull the PCB out using the hole in the PCB



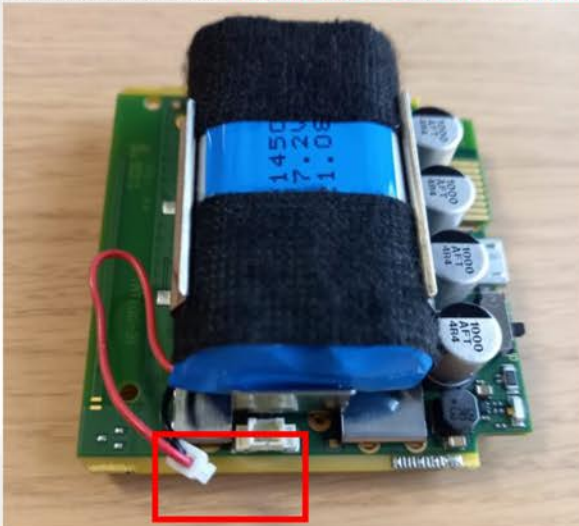
- a. First, slightly take it out from the top side by inserting only the tip of the tool  
**(BE CAREFUL NOT TO BREAK ONE OF THE CAPACITATORS)**



- b. Then, simply turn it over and insert the tool fully to take out the PCB

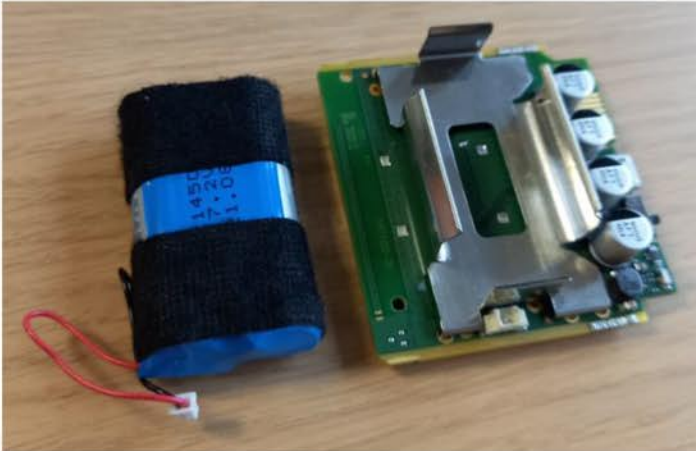


3. Unplug the battery **(Make sure to not pull by the wire)**

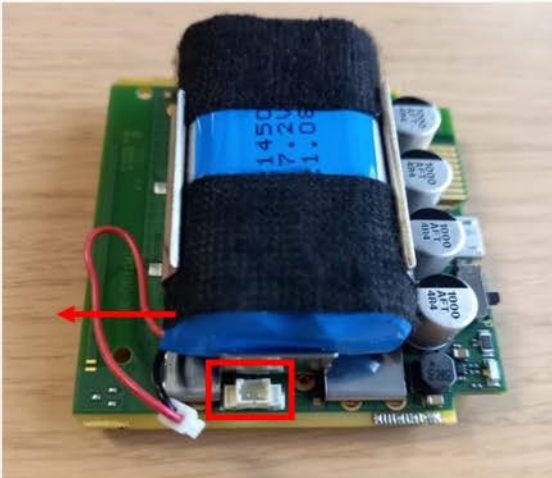




4. Take out the battery pack leaving the metal battery holder on the PCB



5. Place the new battery back the facing the same direction as previously (cable facing same direction as the red arrow and on the same side as the cable port)



6. Make sure to connect the connector plug with the red wire on the right and the black one on the left.



7. Place the PCB back into the housing (GNSS antenna facing the same side as the engraved product information on the housing). Then, close the housing cap.

